

MASTER LEDtube InstantFit HF T5

Product data

General Information	
Cap-Base	G5
Nominal lifetime	60,000 hour(s)
Switching Cycle	50,000
Lighting Technology	LED
Flux measurement reference	Sphere

Light Technical	
Color Code	840 [CCT of 4000K]
Beam Angle (Nom)	200 degree(s)
Luminous Flux	2,500 lm
Color Designation	Cool White (CW)
Luminous Efficacy (rated) (Nom)	151 lm/W
Correlated Color Temperature (Nom)	4000 K
Color Consistency	<6
Color rendering index (CRI)	80
LLMF At End Of Nominal Lifetime (Nom)	70 %
Max. lamp no. on MCB B type 10A – EM ballast with Compensation Capacitor.	-
Max. lamp no. on MCB B type 16A – Mains without Compensation Capacitor.	-
Max. lamp no. on MCB B type 16A – EM ballast without Compensation Capacitor.	-
Max. lamp no. on MCB B type 16A – EM ballast with Compensation Capacitor.	-
Ballast Compatibility	HF

Temperature	
Ambient temperature range	-20 °C to 45 °C
T-Case Maximum (Nom)	65 °C

Controls and Dimming	
Dimmable	Yes – Check ballast compatibility

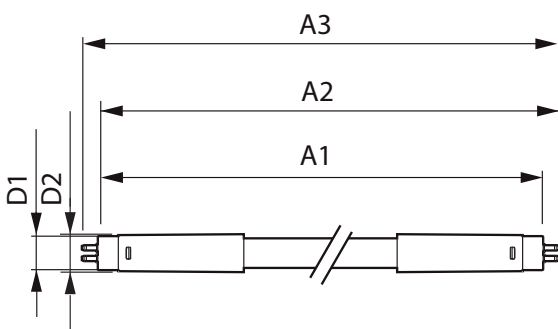
Mechanical and Housing	
Bulb Finish	Frosted
Bulb Material	Glass
Product Length	1,200 mm
Bulb Shape	T5

Approval and Application	
Energy Efficiency Class	D

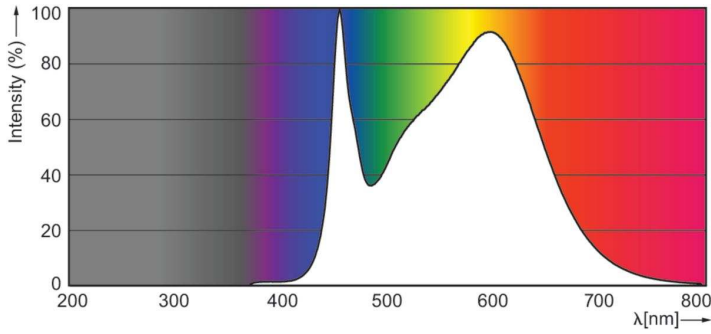
Photobiological safety according to EN 62471	RG0
Operating and Electrical	
Line Frequency	30K to 100K Hz
Input Frequency	30K to 100K Hz
Power Consumption	16.5 W
Lamp Current (Max)	350 mA
Lamp Current (Min)	150 mA
Starting Time (Nom)	0.5 s
Warm-up time to 60% light	0.5 s
Power Factor (Fraction)	0.92
Voltage (Nom)	70-120 V
LED alternative to fluorescent lamp power	28 W
Inrush current at mains	-
Max. lamp no. on MCB B type 10A – Mains	-
Max. lamp no. on MCB B type 10A – EM ballast without Compensation Capacitor.	-
Energy Saving Product	Yes
Approval Marks	RoHS compliance KEMA Keur certificate
Energy Consumption kWh/1000 h	17 kWh
EPREL Registration Number	1384135
CE mark	Yes
EU RoHS compliant	Yes

Product Data	
Order product name	MAS LEDtube HF 1200mm HE 16.5W 840 T5
Full product name	Master LEDtube HF 1200mm HE 16.5W 840 T5
Full product code	871869674331700
Order code	74331700
Material Nr. (12NC)	929001391102
Numerator - Quantity Per Pack	1
Net Weight (Piece)	0.160 kg
EAN/UPC - Product/Case	8718696743317
Numerator - Packs per outer box	10
EAN/UPC - Case	8718696743324

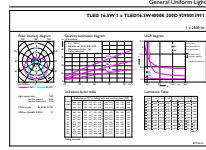
Dimensional drawing



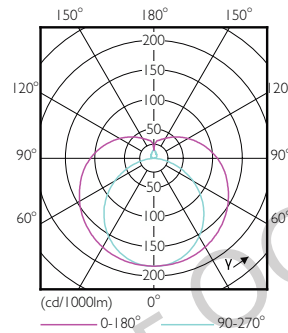
Product	D1	D2	A1	A2	A3
MAS LEDtube HF 1200mm HE 16.5W 840 T5	15.5 mm	18.8 mm	1,149 mm	1,156.1 mm	1,163.2 mm



Spectral Power Distribution Colour - MAS LEDtube HF 1200mm HE 16.5W 840 T5

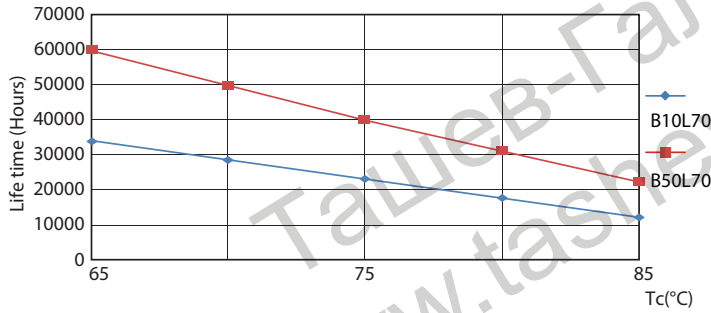


General uniform lighting - MAS LEDtube HF 1200mm HE 16.5W 840 T5

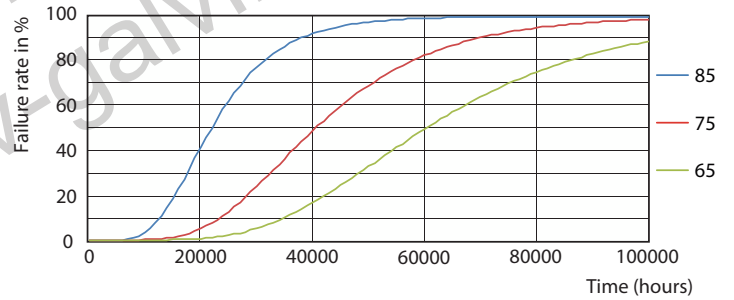


Light Distribution Diagram - MAS LEDtube HF 1200mm HE 16.5W 840 T5

Lifetime



LifetimeVsTc



FailureRate